



## 5G Private Network Ready Camera

It is a Next Generation camera with a perfect blend of looks and features for any security requirement. A 100% “Made in India” product with best-in-class technology, robust mechanical, cloud support and service centers all over the country.

Leveraging the high transmitted power of 5G, Sparsh 5G Camera can transmit or receive video signals over Internet wirelessly by simply powering the camera and inserting a SIM card, eliminating the need of complicated cable and fiber connections. Compared with add-on routers, the built-in 5G module enhances the mobility of its deployment, providing a reliable security solution.

### Key Features:

- Resolution upto 8MP
- On Edge AI
- Lens with Optical zoom 4X/10X
- STARVIS Starlight Sensor
- 100fps for High-Speed Application
- 100m IR Distance
- **Sparsh Cloud Platform**
- **Any third Part platform can be integrated**



### Sparsh Cloud Platform



Control Room

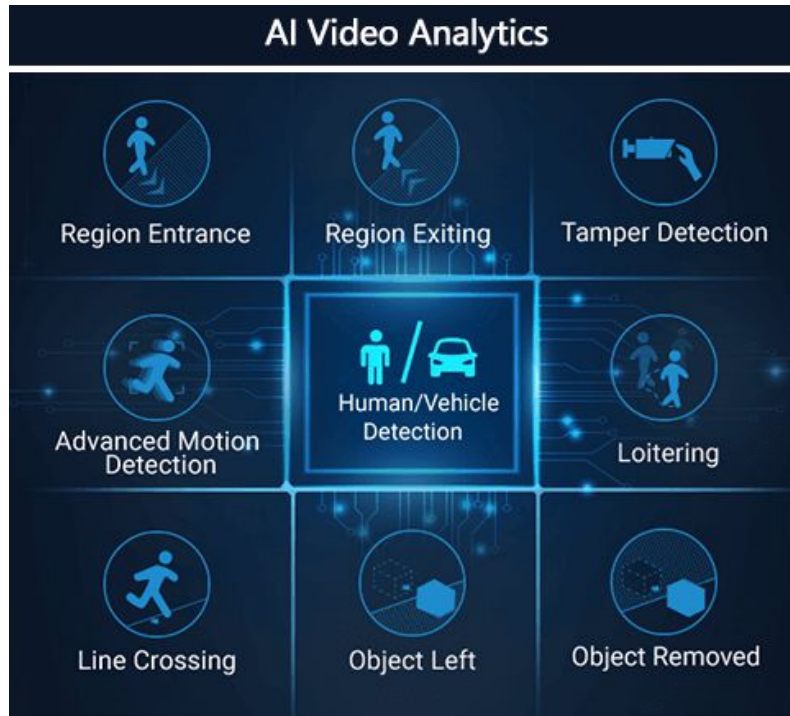


## AI Deep Learning

Sparsh Camera supports AI Video Analytics, People Counting, Face Detection.

Powered by AI chip, it is capable of recognizing vast attributes of human, vehicle and object pattern recognition models. As vehicle and human related events are very important in security monitoring, the filtering is supported to better optimize the efficiency.

### AI Video Analytics



The AI Video Analytics dashboard features a grid of icons representing different detection capabilities:

- Region Entrance
- Region Exiting
- Tamper Detection
- Advanced Motion Detection
- Human/Vehicle Detection (highlighted with a blue border)
- Loitering
- Line Crossing
- Object Left
- Object Removed

### Face Detection



The Face Detection interface shows a person's face with a bounding box and a data panel:

14:30:23

- Female  Adult
- No  No
- No

### People Counting



The People Counting interface shows a scene with people and a data panel:

Person	87
Vehicle	112
Object	25

The data panel also includes a line graph showing the count over time.



## Other 5G Product Line - Future

### Torch Camera



- 4G / LTE Based
- Face Recognition Built-in
- Blacklisting & whitelisting of faces
- Vibration Alert
- Two way talkback
- CDOT CCSP Platform

### Body Worn Camera



- 4G / LTE Based
- Live Audio Video Streaming
- GPS Built-in
- Face Recognition Built-in
- Two way talkback
- Battery Backup upto 13 Hours

### Mobile NVR



- 4G / LTE Based
- Live Audio Video Streaming
- GPS Built-in- IRNSS
- Face Recognition Built-in
- Two way talkback

### Solar Camera



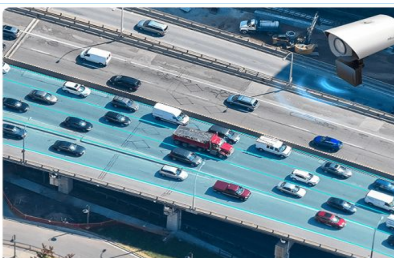
- 4G / LTE Based
- Live Audio Video Streaming
- Two way talkback
- Solar System integrated
- Battery Backup



## Applications of Cameras:

In the absence of a cabled bandwidth connection or pin-plugged wireless connection, cellular connectivity plays an integral role in connecting devices. Similarly, 5G, 4G LTE cellular security cameras develop sustainable and successful connections with cameras to access the live video. These cameras can be feasibly installed inside and outside of the property for reliable security **surveillance on 4G/5G private networks.**

- Isolated properties
- Under-construction buildings
- Highways & Roads
- Wildlife studies
- Vehicles
- Cities
- Public places
- Traffic signals
- Cellular Towers
- Critical infrastructure - water treatment plan etc.







## Few Success Stories

- Bangalore Smart City- Body worn Cameras
- Indore Smart City- 4G Cameras
- Bhopal Smart City- 4G Cameras
- Adani Ports – Body worn Cameras
- Vyom Networks- 4G Cameras
- Indus Tower- 4G Cameras
- Plaser India- MNVRs & Cameras
- Punjab Police– Body worn Cameras
- Haryana Police – Body worn Cameras
- Odisha Police – Body worn Cameras
- Bangalore, Delhi Highways- Solar Based 4G Cameras
- ICICI Bank- Mobile NVR
- Cash Van- Mobile NVR



Thank you !

Corporate Headquarter:

**SAMRIDDDHI AUTOMATIONS PVT. LTD.**

F-365, Sector 63, Noida-201307, UP (India)

Telephone: +91 0120 4518900

Toll Free: **1800102052** | [info@sparshsecuritech.com](mailto:info@sparshsecuritech.com)